

# JONATHAN CHAMBERS

Cell: (904) 982-7711  
JC@ChambersCompany.net

www.HyperactiveDreams.com

1904 2<sup>nd</sup> Street South  
Saint Petersburg, FL 33705

Producer  
Unit Production Manager (DGA)  
First Assistant Director (DGA)

More than nine hundred feature films, television programs, television commercials,  
social media, ancillary video and advertising projects

Industry executives' comments:

**"When we realized that we needed someone who could really help us pull off [the TV series] you were our first choice..."**

Rob Loos & George Taweel - Exec. Producers  
*The All New Captain Kangaroo Show*

**"Top-notch producing that leaves no stone un-turned. Jonathan gets it done."**

Andrew Allan - Senior Writer/Producer  
Home Shopping Network

**"Do you realize that we shot 32 news people and over 40 locations and set-ups? In six days? With hindsight it seems impossible but we did it. Actually, I believe it would have been impossible without you. You're a wizard."**

Judy Law - Director of Television Programming:  
KIRO-TV - Seattle

**"I'd like to take this opportunity to express my appreciation for your invaluable contribution to the project. During the course of production I was constantly amazed at what you were able to accomplish with so little time and less money. I had serious doubts from the beginning that you (or anyone else) could bring us in on schedule. Needless to say, I was immensely delighted, as it turned out, to be wrong."**

Eric Young - Producer: Independent Feature Film – *The Taste of Hemlock (aka: Fatal)*

## EDUCATION

Bachelor of Science, Film – S. I. Newhouse School of Public Communications, Syracuse University

# Feature Films, Television Programs and Shorts

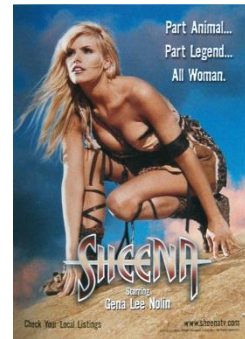
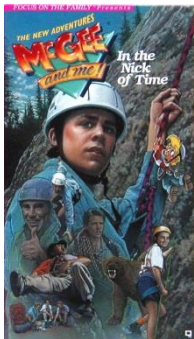
Producer, Co-Producer, Associate Producer, Production Manager, and/or Assistant Director

More than nine hundred feature films, television programs, television commercials, social media, ancillary video and advertising projects

## Feature Films and Television Movies:

*Graduation Summer*  
*Home Invasion*  
*Kiss the Girls*  
*Not Alone*  
*Outside the Law*  
*Pastime (Sundance Audience Award)*

*Six Dance Lessons in Six Weeks (USA)*  
*The Taste of Hemlock (aka: Fatal)*  
*Time Zone*  
*Walking Across Egypt*  
*Wolverine*



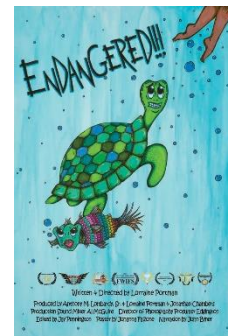
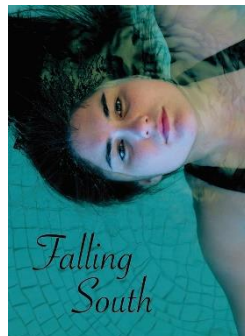
## Television Series and Specials:

*All New Captain Kangaroo*  
*Beverly Hills 90210*  
*Captain Kangaroo & The Wiggles*  
*Daylight Robbery II*  
*Home Alone Again*  
*McGee and Me!*  
*Mister Moose's Fun Time*

*Reading Buddies*  
*Ripley's Believe It or Not*  
*Secret Adventures*  
*Sheena*  
*Sitcom Moms*  
*Taxi Retrospective*

## Honored Short Films:

*Falling South*  
*Jordan Almonds*  
*Endangered*



# Television Commercials

*More than 700 commercials including:*

<u>Production Company</u>	<u>Client</u>	<u>Director</u>	<u>Notes</u>
Artifact Design	Tampa General Hospital	Lorenzo de Guia	Location, water, one-shot
Avalon Films	Blockbuster, MGM Grand	Dan Hackett	Location, night shoot
Avalon Films	Southern Ford Dealers	Dan Hackett	Location, cars
Bassinson Productions	Kraft Foods	Oscar Bassinson	Studio, food product shots
Bond Films	Michigan Lottery	Brian Coyne	Location
Bond Films	Metro Detroit Ford	Brent Ramsey	Cars, location
Crossroads Films	Gatorade	Mark Pellington	Celebrity, location
Falcon Productions	Capital One/MasterCard	Errol Falcon	Celebrity, stage
GreyHouse Films	Bono's Bar-B-Q	Curtis Graham	Food, non-actors, location
GreyHouse Films	Vigo Foods	Curtis Graham	Food, children, location
Home Shopping Network	Multiple branding projects	Craig Worsham	Fashion, jewelry, green screen
Italia Advertising	EAS	Jesse Griffith	Sports celebrities, location
Kohl Pictures	Golf Channel	Mark Kohl	Stunt, helicopter
Kohl Pictures	Titleist	Mark Kohl	Golf celebrities, location
Lumina Productions	CenturyTel	Curtis Graham	Location
Lumina Productions	Plateau Wireless	Curtis Graham	Location, celebrity, animals
Millennium Prod.	Pepsi/Food Lion	Mark Kohl	Celebrity, location
NBA Entertainment	NBA Entertainment	Peter Iannucilli	Sports celebrity, children, location
NFL Films	Super Bowl XXXVII	Rob Markopoulos	Location, BG actors, crane
Productions Direct	Health Net	John Lawlor	Multiple locations
Ruckus Film	Jake Owen "Yee Haw"	Wes Edwards	Music video, location
Soltoff Direct	Rhino Truck Linings	Dan Bramm	Location
Steam Films/Lumina Prod.	Pinellas County Tourism	Wayne Craig	Location
Tampa Digital Studios	Drug Free America Found	Mike McCourt	Location, stunts
Tampa Digital Studios	Hospice	Mike McCourt	Location, real people/non-actors
The Bridge Company	ESPN MNF	Mike Jurkovic	Celebrity, insert car
Three Chairs Productions	NAPA Auto Parts	Ricardo Ceballos	Technocrane,
Three Chairs Productions	Seiko	Manfred Reiff	Celebrity, insert car
Three Chairs Productions	Terminex	Eric Pilhofer	Location
Tim Patterson Prod.	Cleveland Golf	Tim Patterson	Celebrity golfers
Tom Reid Motion & Stills	Bright House	Jon Fauer	Celebrity
Two Popes	Napa Auto Parts	Jerry Pope	Celebrities, process trailer
TVP	Captain D's	David Leavell	Location, boats, BG actors
Universal Studios	The Mine	Dean Karr	Studio, location, crane
Viva Films	Denny's Restaurants	Keith Ward	Location, Stage, BG actors
Viva Films	Univision.com	Javier Blanco	TV celebrities, location
Whiteline Creative	Big Storm Brewing	Joshua Long	Location, night shoot
Will Van Der Vlught Prod.	Hyundai	Will Van Der Vlught	Cars, motion control, helicopter
Will Van Der Vlught Prod.	Truth (Anti-smoking)	Will Van Der Vlught	Specialty costumes, make-up, FX

-----  
 Extensive location and studio experience in Florida and California, plus select distant locations in:  
 Arizona, British Columbia, Georgia, Iowa, Mexico, Michigan, New Mexico, New York, Puerto Rico, Texas

Projects featuring: Automobiles, green screen, boats, camera cars and process trailers celebrities, children, crowds, exotic animals, golf courses, helicopters, motion control, special effects, explosions, stunts, wire rigs, theme parks